

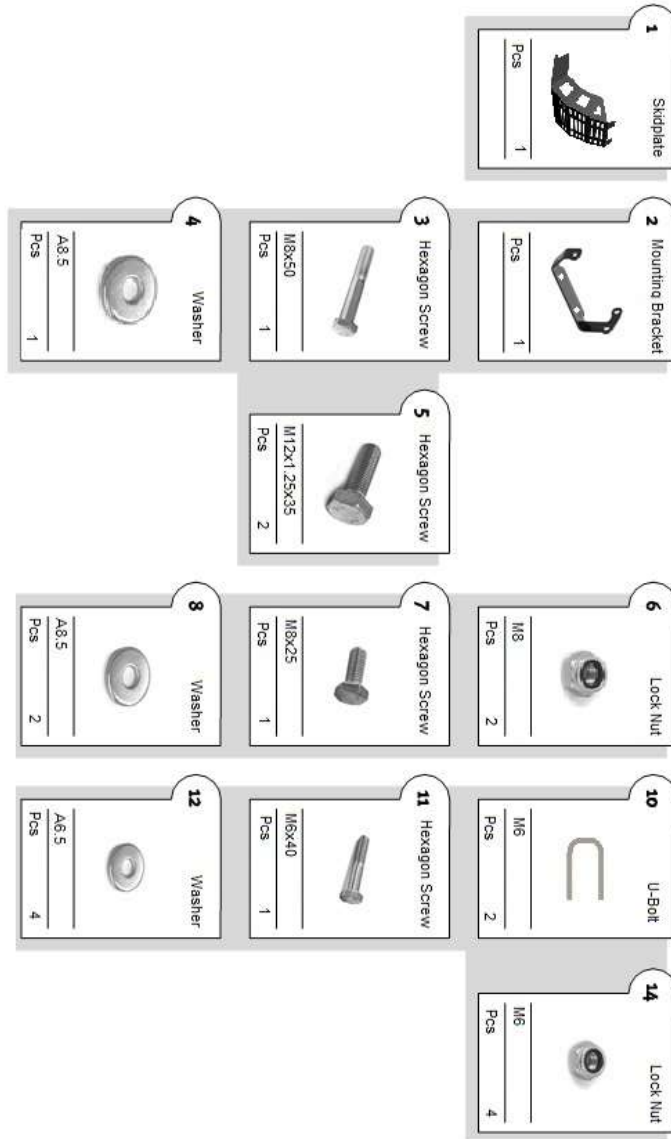


Skidplate SUZUKI DL650 2012-2019



Installation Instructions

Parts to be installed.



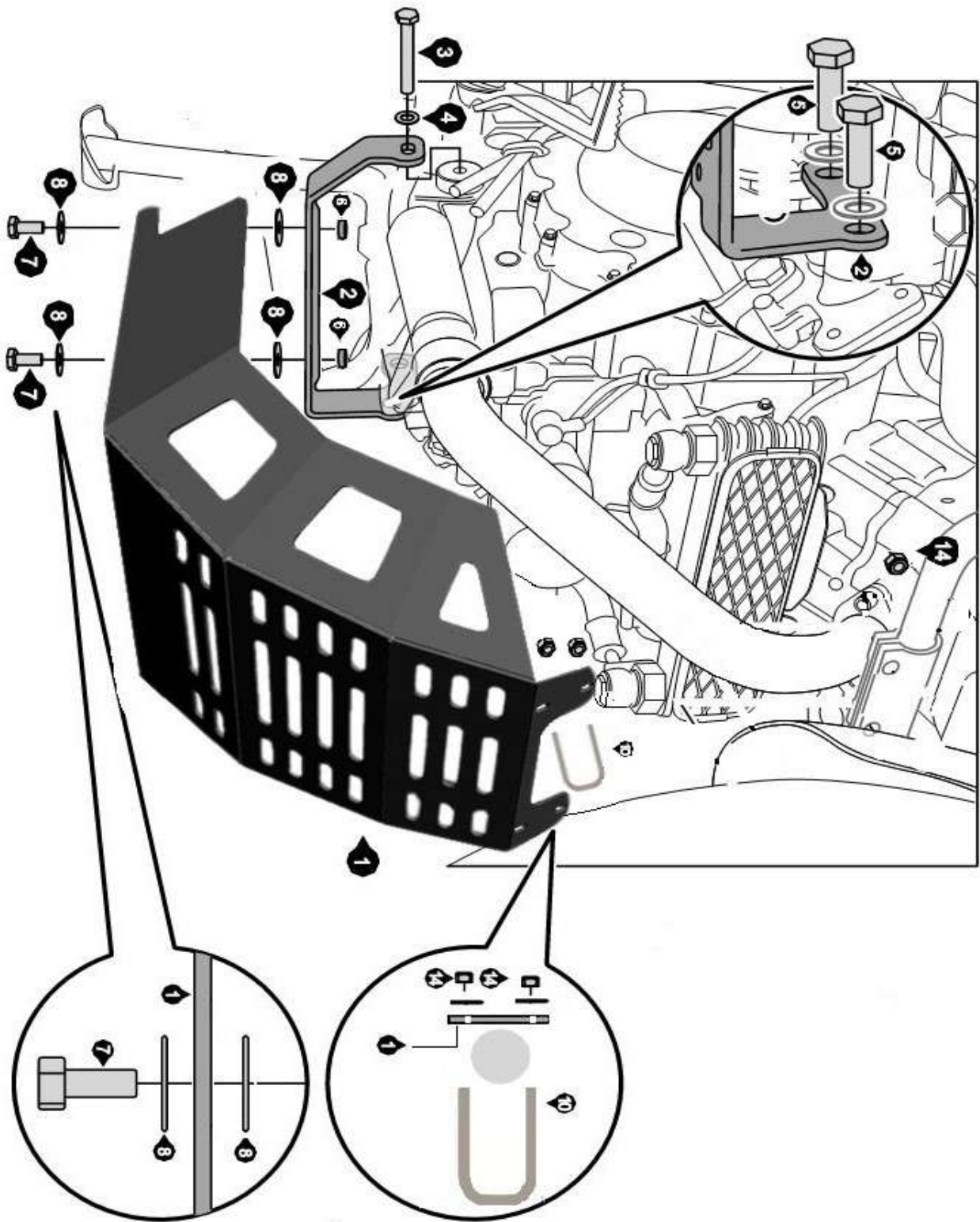


photo 1

Installation

Step 1: Have the bike on the centerstand or secure it on standing position.

Step 2: Remove the side stand.

Step 3: Install part 2 (photo1).

Step 4: Have the U-Bolts mounted first and then connect the part 1 with the part 2. The U-bolts go on the outside and the skidplate mounts on the inner side of the crashbars.