



C-RACER
www.c-racer.com

INSTRUCTION

Model	Product	Code
Royal Enfield Interceptor 650 Royal Enfield Continental GT 650	.Rear Fender .With Stop Light Rear Fender	RF-RE RFL-RE

You are advised to read the instructions carefully, before you proceed to any changes.
Any modifications on your motorcycle should be performed by specialized personnel,
however the installation process of this product is quite easy if you follow the instructions below.

CONTENTS

RFL-RE

- 1 X Plastic Fender
- 1 X Plastic Cover
- 1 X Stop Light
- 1 X metallic plate (L-RE-FLASH1)
- 1 X metallic plate (L-RE-FLASH2)
- 2 X plastic part (P-TAPA1)
- 1 X plastic part (P-STOP1)
- 2 X screws M6X25 (allen-milling)
- 1 X screws M6X20 (hexagonal washer)
- 1 X screws M8X25 (hexagonal)
- 2 X screws M6X25 (allen)
- 1 X screws M5X30 (allen)
- 5 X safety nuts M6
- 1 X safety nuts M8
- 1 X safety nuts M5
- 3 X washer 6x18
- 1 X washer 8x24
- 3 X tireups 200X3,5
- 2 X safety nuts 12x125

RF-RE

- 1 X Plastic Fender
- 1 X Plastic Cover
- 1 X metallic plate (L-RE-FLASH1)
- 1 X metallic plate (L-RE-FLASH2)
- 2 X plastic part (P-TAPA1)
- 2 X screws M6X25 (allen-milling)
- 1 X screws M6X20 (hexagonal washer)
- 2 X screws M6X25 (allen)
- 5 X safety nuts M6
- 3 X washer 6x18
- 3 X tireups 200X3,5
- 2 X safety nuts 12x125



1-2



Remove the seat cover and unclip the fuse that powers up the tail lights (photo 1). Then undo the screws that hold the front fender in place (photo 2).



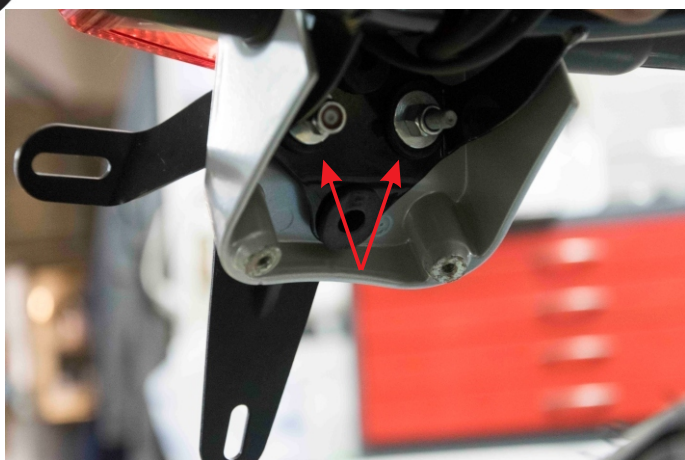
3-4



Proceed by removing the screws as shown with the arrows in photo No3. The fender will be released and all you have to do is to unclip the fuse of the tail lights



4



To remove the tail lights you will have to remove the 2 screws that the arrows in the left hand photo show you.

You will also have to remove the wire located under the fender as you will need to use it later on.

If you intend to use the original flash lights, you will also have to remove them as well.

5-6

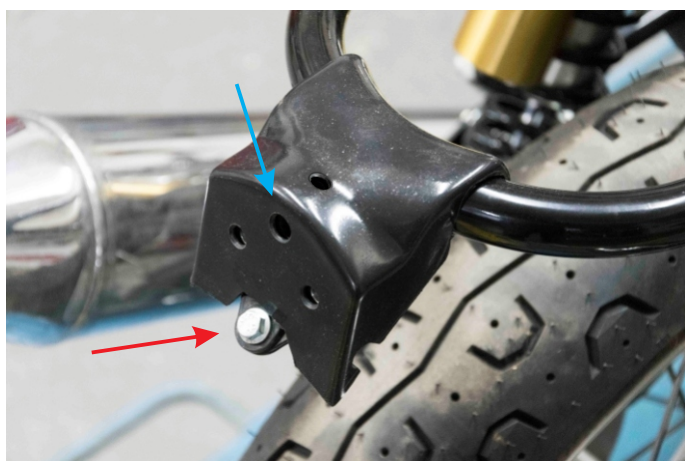


Slide the wire under the fender and hold it in place using the tireups without tightening them yet (photo 5)



If in your purchased product there is also a tail light, **(only for RFL-RE)**, you will need to change the base of the tail light as shown in photo 6.

7



.Put the plastic cover in position as you see in the photo , and do not forget to use the screw **(RED arrow** in the photo -M6X20 hexagonal washer) as you will not be able to do so later.

.If the product you have in your hands is **(RFL-RE)** you will need to drill a hole before positioning it **(BLUE arrow** in the left hand photo). There is a socket that shows exactly where you should drill the hole, which is 8,5-9 mm.

8



Position the base plate for your chosen flash lights and continue with the number plate of your motorcycle.

Align them in place and tighten them using the (M6X25 & nuts M6) screws that you will find inside the installation package.

9



If the product you have in your hands is **(RF-RE)** then you will have to place the tail light as well.
Place the tail light with the new base plate and the screw which protrudes from the hole that you have already drilled, align it and tighten it in place.

Continue by placing the flash lights of your choice and sliding the wires through the notches that are on the plastic cover.

10



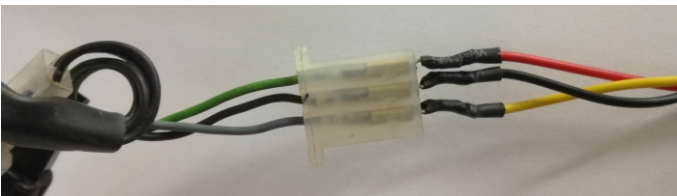
Put the oval plugs in the equivalent notches before sliding through the fender and slightly tightening the nuts that hold the fender in place. Do not forget to place the wire in its previous position.

11



Join the flash light fuses and place them carefully under the small cover, being careful not to mangle them with the cover. If you already have a flash light, the cable should be inserted into the hole showing the arrow of the cover and through the notches of the plastic cover – the same as the flash lights

Connect the cables as the photo shows

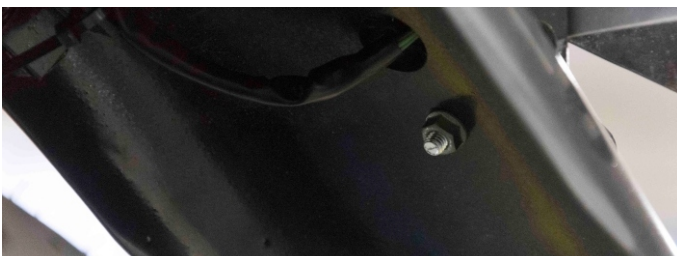


If the seat to be put after the Café Racer SCR-RE-CR then you have to take the plug out of the frame, as shown in the photo.

12



Tighten the main screw that you had placed under the base of the number plate. Tighten all the screws firmly and make sure you have placed all the wires under the plastic cover

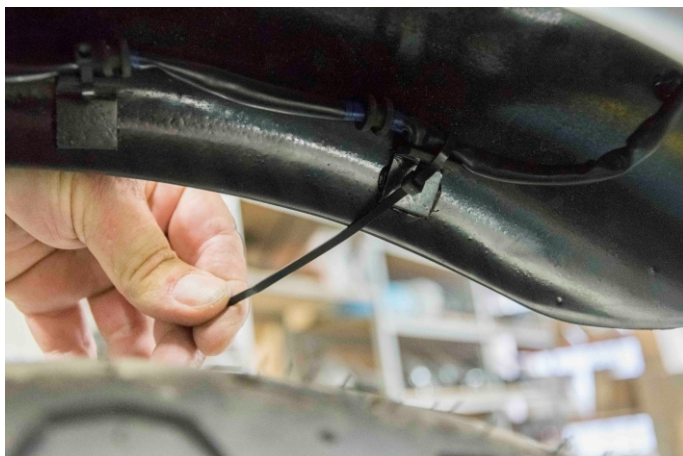


13



Click the main fuse in place and check to see if the flash lights work

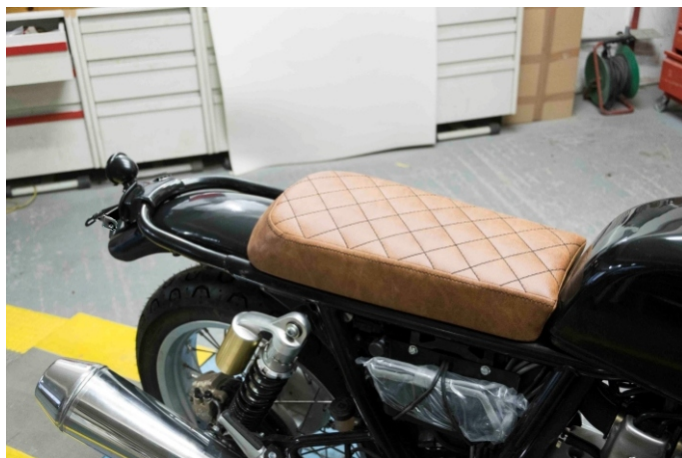
14



Tighten the tireups so that they firmly hold the wire in place, and cut off any extra tips



The end result should appear as in the photo.



Then you may place the seat cover of your choice - either the Café Racer or the Scrabler seat. You may even use your original seat cover

Thank you for choosing one of our products.

The product is for race use only

For any further information please do not hesitate to contact us: Tel.: +30 2108075387 Email: info@c-racer.com