



## INSTRUCTIONS



**MODEL :** SUPER DUKE 05+

**PRODUCT :** RADIATOR GRILL

**CODE :** RG-KTMSD

### CONTENTS

- Grill
- Duct tape 8 pieces
- 2 pieces Tire ups

### MATERIAL SPECIFICATIONS

The product is made from 1,5 mm DCP plate and grid of aluminum 1,3 mm. All are painted with powder paint (electrostatic) and is ready to be installed.



Photo No 1

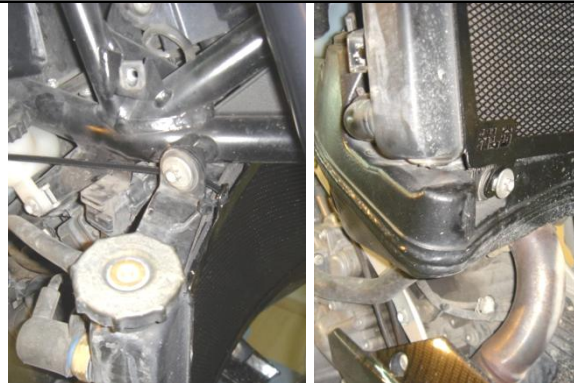


Photo No2

### PLACEMENT

Place the sieve upside down and put pieces of duct tape on the corners from the inside side.

Route cable ties as shown in (Photo # 1).

Remove the side cover of the motorcycle to access the screws on the radiator. Also remove the two screws that hold down the radiator.

Place the grill in place and put the screws removed at the bottom of the radiator.

Route cable ties as shown (photo # 2) and tighten very well. Cut that by unnecessary cable ties and tighten the screws down.

Finally refit the side flaps of the motorcycle.

For any further information please do not hesitate to contact us: Tel.: +30 210 8075387 Email: tech@hld.gr

