



C-RACER
www.c-racer.com

INSTRUCTION

Model	Product	Code
Yamaha XSR 700 2016+	Flat Track Seat	SCR-YXSR-NSB-B/A SCR-YXSR-NSB-B/B

You are advised to read the instructions carefully, before you proceed to any changes.
Any modifications on your motorcycle should be performed by specialized personnel,
however the installation process of this product is quite easy if you follow the instructions below.

CONTENTS

- 1 X seat
- 1 X metal cover

SCR-YXSR-NSB-B/B



This is the original seat cover placed on your motorcycle.
As you see in the photo on the left, the two red arrows show you the points where the seat clips on.
The front one just clips on the base of the seat and the rear clips on inside the lock.



Your new seat has the exact same clip on points.



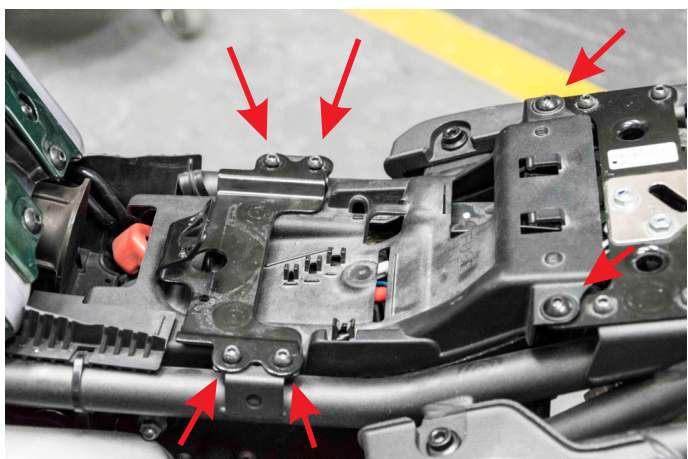
3



Remove the old seat using your key. And clip on the new one in the exact same way.

The seat can be placed without the subframe.
If you wish to remove the subframe, follow the procedure below as described.

4



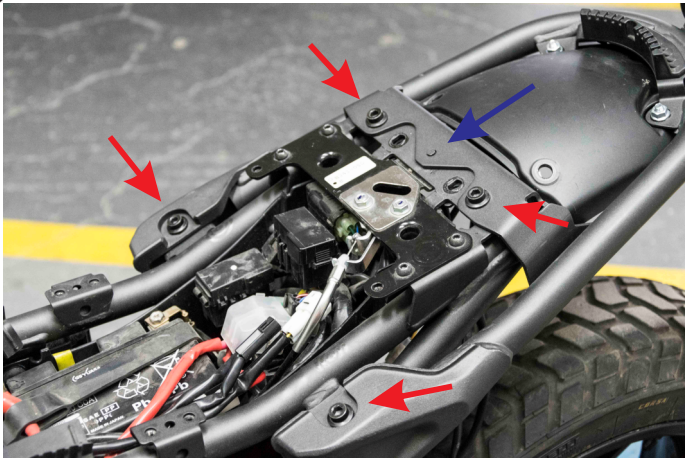
Remove first the front supporting system of the seat, as well as the battery's plastic cover and the motorcycle's wiring. To do that, you must remove the screws as shown in the photo on the left.

5



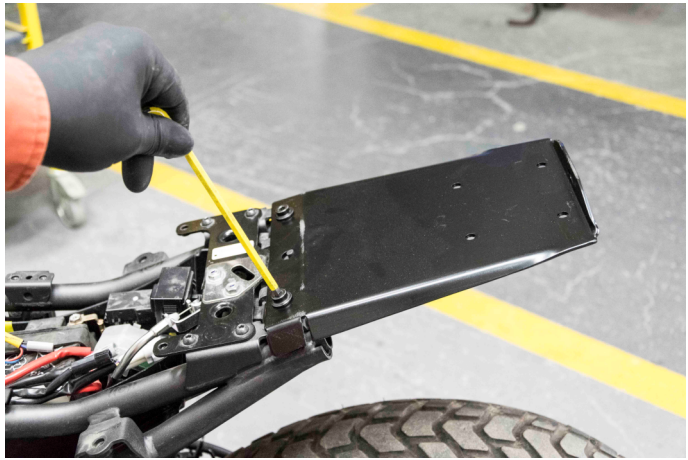
Once you remove the seat cover you must disconnect the 4 plugs that you see on the left photo. The biggest connector (white) is for the tail light. The two middle-sized connectors (grey & black) are for the flash lights and the small grey one is for the license plate's light.

6



Remove the 4 screws, as shown in the photo on the left, and the subframe will be released – do this with caution as the subframe is quite heavy. The blue arrow (in the photo) is the point that aligns the subframe – you need to uplift it so the subframe can be released.

7



Place the metal cover, that is included in the package, and use the 2 screws you removed to screw it in place – make sure you align it before tightening the screws. Then you are ready to clip on the seat just as the original.



The end result is as shown in the photos above.
Thank you for choosing one of our products.
You may watch the installation video at the following link: https://youtu.be/ZPMxHIUX_OI

The product is for race use only
For any further information please do not hesitate to contact us: Tel.: +30 2108075387 Email: info@c-racer.com