



Yamaha MT-09 Tracer

GPS - Phone Bracket

Installation Instructions

Parts to be installed.

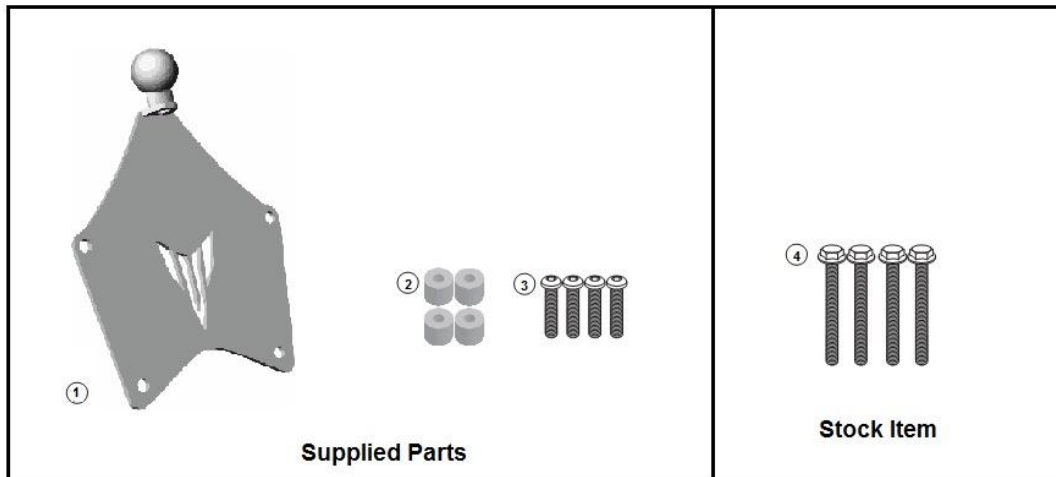


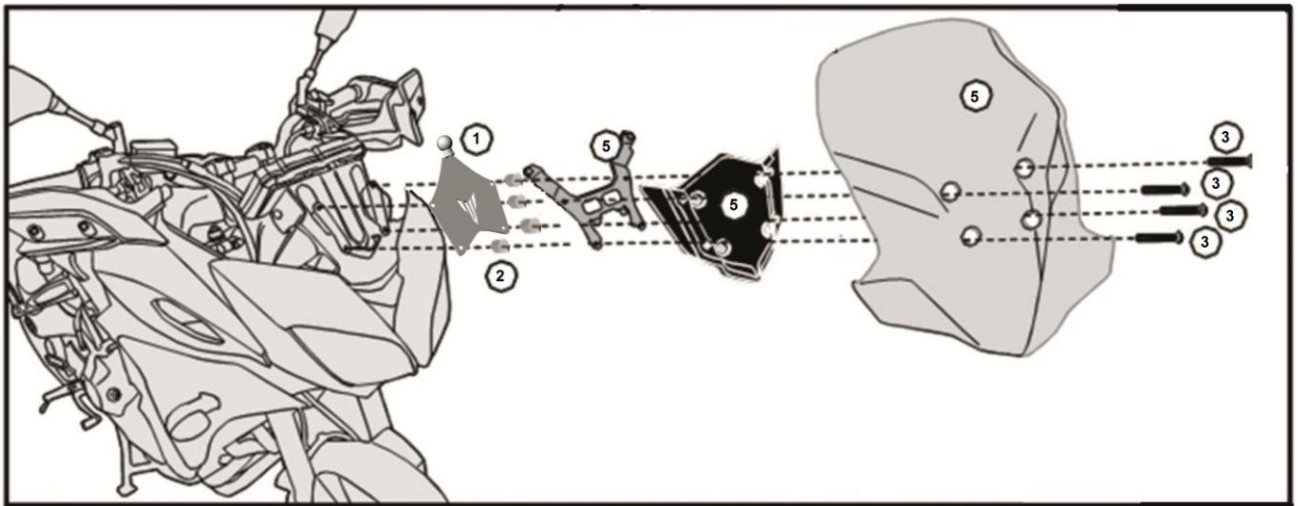
Photo 1

Part 1: 1pc - 25mm ball version or 22mm Bar version

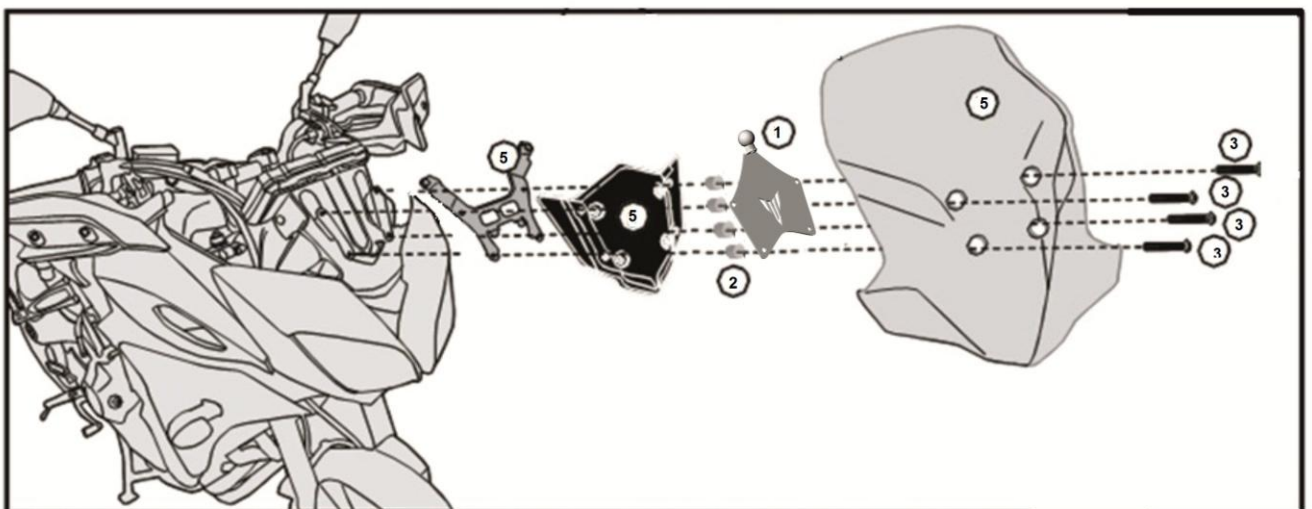
Part 2: 4pcs - spacers

Part 3: 4pcs – M6x30 bolts

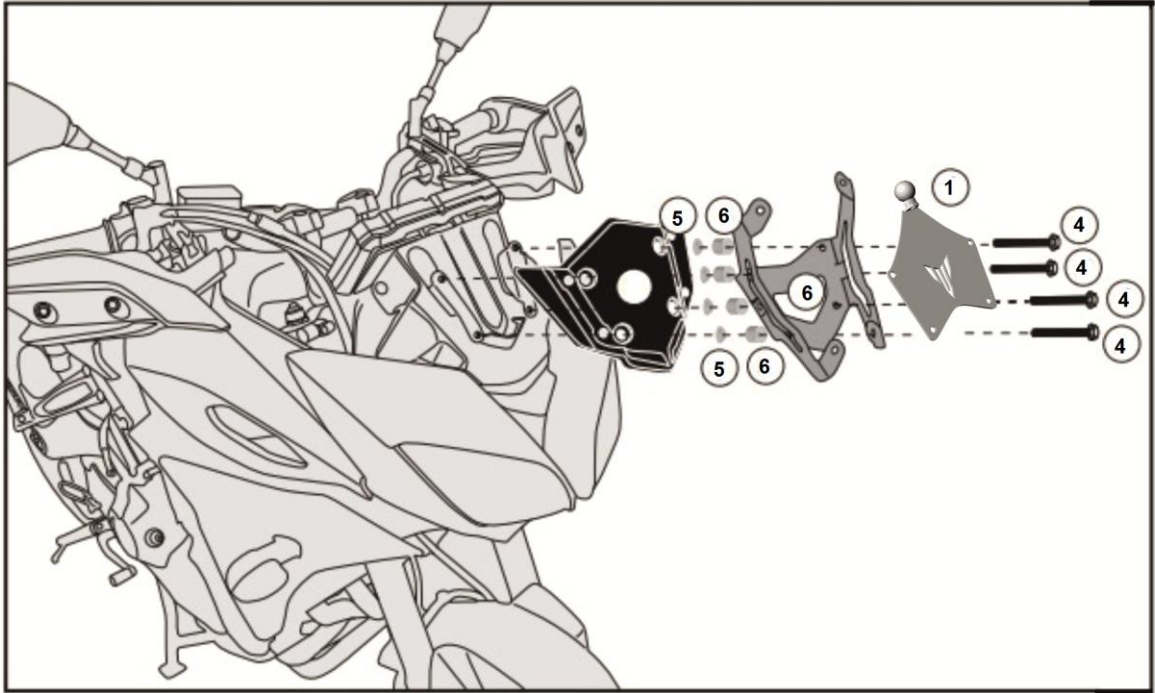
The GPS bracket (1) can be installed in three different ways according to the type of your windscreen and according to the position of your windscreen. It is compatible to all windscreens. Follow the installation that will best suit your windscreen set up and type.



Installation 1



Installation 2



Installation 3

Items 4 and 5 are stock items.

Items 4 and 6 are supplied with your windscreen.