



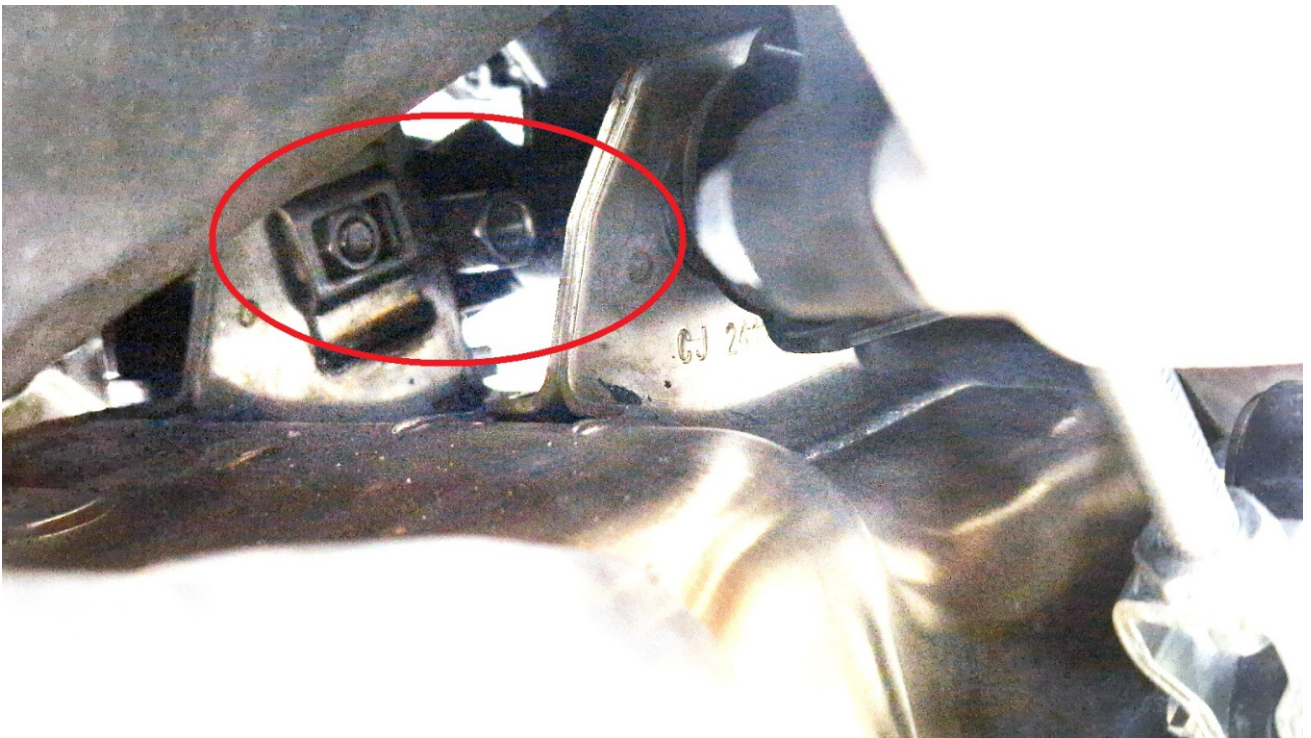
Step 1: Left side. Remove the bolts from the foot rest and the bolt from the skidplate holder.



Step 2: Remove the bolt that is seen in the above photo.



Step 3: Install the left bracket. Have the countersunk bolts (M10x60 and M8x70) in the brackets and then have the bracket in position. Bolt the M8 and use the M10 nut to secure the M10.



Step 4: The M10 nut can be accessed from the middle of the topside of the swingarm.



Step 5: Attach the bracket seen above to the skidplate bolt we removed at step 1. Use the stock bolt. Attach the other side to the left bracket installed in step 3. Use M10x12 bolt. Use supplied thread locker for M10 bolt.



Step 6: Remove bolts from the right foot rest. Install 22mm spacer to the brake fluid container. Use bolt M6x35 with washer.



Step 7: Install right bracket behind the foot rest. Use 2 bolts M8x50 with washer.



Step 8: Install special washer on both sides of the stand. Use bolts M10x35 with washer to attach the stand to the right and left bracket as seen in above photos. **Use supplied thread locker.**



STEP 9: Attach double spring to the right bracket and use a flat screw driver to hook it at the stand.



STEP 10:Reinstall the foot rest on the left side.